

Initial S™: Single use sterile kits for Ø3.5 mm chamfered cannulated screws

Initial S™ - Kit content

Indications:

The Initial S™ single use sterile kits consist of a set of instruments or a set of instruments and implants (washers) to be used only in trauma or orthopaedic surgery, when Newclip Technics screws for osteosynthesis are fitted. Implants of the Stand-Alone Screws range are intended for fractures fixation, osteotomies and arthrodeses of bones in adults and adolescents, appropriate for the size of the device.

Contraindications:

- Serious vascular deterioration, bone devitalization.
- Pregnancy.
- Acute or chronic local or systemic infections.
- Lack of musculo-cutaneous cover, severe vascular deficiency affecting the concerned area.
- Insufficient bone quality preventing a good fixation of the implants into the bone.
- Muscular deficit, neurological deficiency or behavioral disorders, which could submit the implant to abnormal mechanical strains.
- Allergy to one of the materials used or sensitivity to foreign bodies.
- Serious problems of non-compliance, mental or neurological disorders, failure to follow post-operative care recommendations.
- Unstable physical and/or mental condition.

STERILE INSTRUMENTATION FOR Ø3.5 MM CHAMFERED CANNULATED SCREWS

| Ref. | Description | Content | Qty |
|------------|---|--|-----|
| KIT-SCN3.5 | Kit for Ø3.5 mm chamfered cannulated screws | Ø2.5 mm quick coupling drill bit – Cannula Ø1.3 mm – L110 mm | 1 |
| | | 3 in 1 instrument for Ø3.5 mm screws | 1 |
| | | Pin Ø1.2 mm L150 mm | 3 |
| | | 5.8 mm single use handle | 1 |

OPTIONAL STERILE INSTRUMENTATION

| Ref. | Description | Qty |
|-------------|--|-----|
| ANC1074-ST* | Length gauge for pin Ø1.2 mm - L 75 mm | 1 |

*Available separately to measure screws from L50 mm to L60 mm.

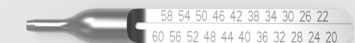
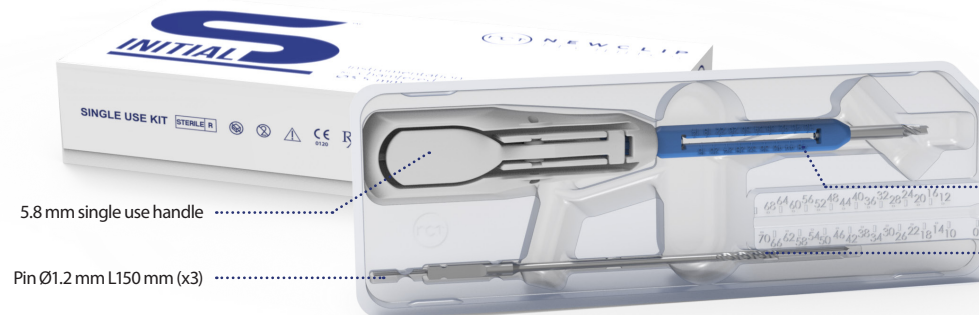
REMOVAL KIT

| Ref. | Description | Content | Qty |
|--------------|--|--|-----|
| KIT-REMOVE-6 | Removal kit for hexagonal stamp 2.5 mm | 2.5 mm hexagonal non prehensor screwdriver | 1 |

Ø3.5 MM CHAMFERED CANNULATED SCREWS*

| Ref. | Description |
|------------------|---|
| H1.25NT3.5L20-ST | Self-drilling self-compressive screw with chamfered head Ø3.5mm - Cannulated Ø1.25 mm - L 20 mm - STERILE |
| H1.25NT3.5L22-ST | Self-drilling self-compressive screw with chamfered head Ø3.5mm - Cannulated Ø1.25 mm - L 22 mm - STERILE |
| H1.25NT3.5L24-ST | Self-drilling self-compressive screw with chamfered head Ø3.5mm - Cannulated Ø1.25 mm - L 24mm - STERILE |
| H1.25NT3.5L26-ST | Self-drilling self-compressive screw with chamfered head Ø3.5mm - Cannulated Ø1.25 mm - L 26 mm - STERILE |
| H1.25NT3.5L28-ST | Self-drilling self-compressive screw with chamfered head Ø3.5mm - Cannulated Ø1.25 mm - L 28 mm - STERILE |
| H1.25NT3.5L30-ST | Self-drilling self-compressive screw with chamfered head Ø3.5mm - Cannulated Ø1.25 mm - L 30 mm - STERILE |
| H1.25NT3.5L32-ST | Self-drilling self-compressive screw with chamfered head Ø3.5mm - Cannulated Ø1.25 mm - L 32mm - STERILE |
| H1.25NT3.5L34-ST | Self-drilling self-compressive screw with chamfered head Ø3.5mm - Cannulated Ø1.25 mm - L 34 mm - STERILE |
| H1.25NT3.5L36-ST | Self-drilling self-compressive screw with chamfered head Ø3.5mm - Cannulated Ø1.25 mm - L 36 mm - STERILE |
| H1.25NT3.5L38-ST | Self-drilling self-compressive screw with chamfered head Ø3.5mm - Cannulated Ø1.25 mm - L 38 mm - STERILE |
| H1.25NT3.5L40-ST | Self-drilling self-compressive screw with chamfered head Ø3.5mm - Cannulated Ø1.25 mm - L40 mm - STERILE |
| H1.25NT3.5L42-ST | Self-drilling self-compressive screw with chamfered head Ø3.5mm - Cannulated Ø1.25 mm - L 42 mm - STERILE |
| H1.25NT3.5L44-ST | Self-drilling self-compressive screw with chamfered head Ø3.5mm - Cannulated Ø1.25 mm - L 44 mm - STERILE |
| H1.25NT3.5L46-ST | Self-drilling self-compressive screw with chamfered head Ø3.5mm - Cannulated Ø1.25 mm - L 46 mm - STERILE |
| H1.25NT3.5L48-ST | Self-drilling self-compressive screw with chamfered head Ø3.5mm - Cannulated Ø1.25 mm - L 48 mm - STERILE |
| H1.25NT3.5L50-ST | Self-drilling self-compressive screw with chamfered head Ø3.5mm - Cannulated Ø1.25 mm - L 50 mm - STERILE |
| H1.25NT3.5L52-ST | Self-drilling self-compressive screw with chamfered head Ø3.5mm - Cannulated Ø1.25 mm - L 52 mm - STERILE |
| H1.25NT3.5L54-ST | Self-drilling self-compressive screw with chamfered head Ø3.5mm - Cannulated Ø1.25 mm - L 54 mm - STERILE |
| H1.25NT3.5L56-ST | Self-drilling self-compressive screw with chamfered head Ø3.5mm - Cannulated Ø1.25 mm - L 56 mm - STERILE |
| H1.25NT3.5L58-ST | Self-drilling self-compressive screw with chamfered head Ø3.5mm - Cannulated Ø1.25 mm - L 58 mm - STERILE |
| H1.25NT3.5L60-ST | Self-drilling self-compressive screw with chamfered head Ø3.5mm - Cannulated Ø1.25 mm - L 60 mm - STERILE |

*Screws available separately in sterile version (S-Box).



Optional: length gauge for screws from 50 to 60 mm

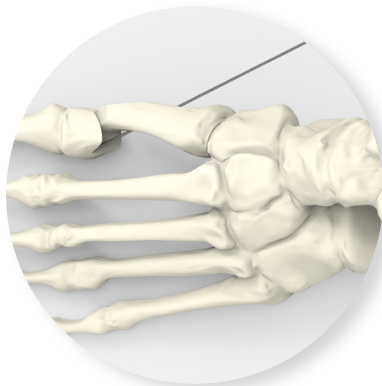


NEWCLIP
TECHNICS

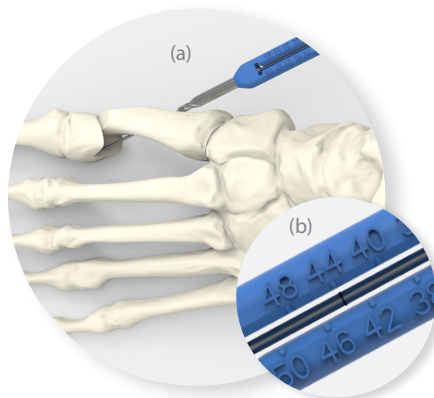


Initial S™: Single use sterile kits for Ø3.5 mm chamfered cannulated screws

Surgical technique



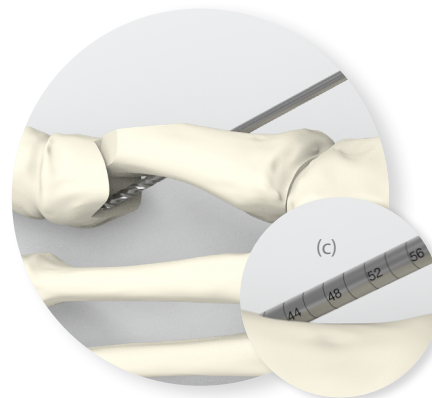
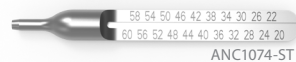
1. Insert the Ø1.2 mm pin to maintain the correction.



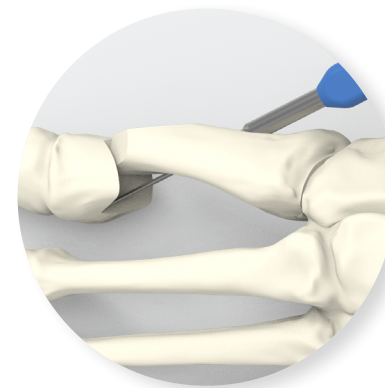
2. Slide the 3 in 1 instrument along the Ø1.2 mm pin until the cortex is reached (a). With the measuring gauge part of the instrument, read the insertion depth using the marking on the pin (b).

NB: The pin can then be inserted deeper in order to prevent its removal during drilling.

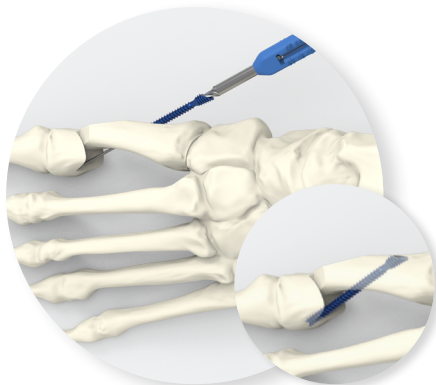
For screws from L50 mm to L60 mm, replace the 3 in 1 instrument by the length gauge (available separately) to read the insertion depth.



3. Perform the drilling to the desired depth, which can be checked using the markings on the drill bit (c).

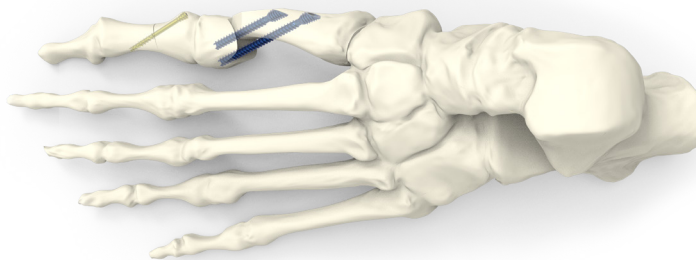


4. To make the screw insertion easier, widen the first cortex using the countersink part of the 3 in 1 instrument.



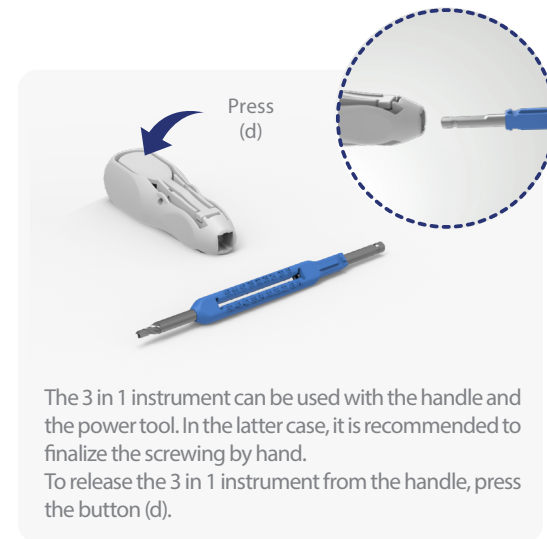
5. Select the appropriate screw length and insert the screw along the pin using the screwdriver part of the 3 in 1 instrument until the desired reduction and compression are achieved. Then, remove the pin.

NB: During the screwing step, pay particular attention to the positioning of the screwdriver in the screw head, to ease the control that the screw head is flush to the bone once screwed in.



FINAL RESULT

Complete the construct by inserting a second screw following steps 1 to 5.



The 3 in 1 instrument can be used with the handle and the power tool. In the latter case, it is recommended to finalize the screwing by hand. To release the 3 in 1 instrument from the handle, press the button (d).



NEWCLIP TECHNIQUES

PA de la Lande Saint Martin, 45 rue des Garottières
44115 Haute Goulaine, France
+33 (0)2 28 21 23 25
orders@newcliptechnics.com
www.newcliptechnics.com

NEWCLIP USA

642 Larkfield Center
Santa Rosa CA 95403, USA
+1 707 230 5078
customerservice@newclipusa.com
www.newclipusa.com

NEWCLIP GmbH

Pröllstraße 11
D-86157 Augsburg, Deutschland
+49 (0)821 650 749 40
info@newclipgmbh.com
www.newclipgmbh.de

NEWCLIP Australia

3B/11 Donkin Street
West End 4101, Australia
+61 (0)2 81 886 110
solutions@newclipaustralia.com
www.newcliptechnics.com

NEWCLIP TECHNIQUES Japan K.K

KKK Bldg 502, 3-18-1 Asakusabashi
Taito-Ku, Tokyo, 111-0053, Japan
+81 (0)3 58 25 49 81
Fax: +81 (0)3 58 25 49 86
www.newcliptechnics.fr

The information presented in this kit composition is intended to demonstrate Newclip Technics products. Always refer to the package insert, product label and/or user instructions before using any Newclip Technics product. Surgeons must always rely on their own clinical judgment when deciding which products and techniques to use with their patients. Products may not be available in all markets. Product availability is subject to the regulatory or medical practices that govern individual markets. Please contact your Newclip Technics representative if you have questions about the availability of Newclip Technics products in your area.